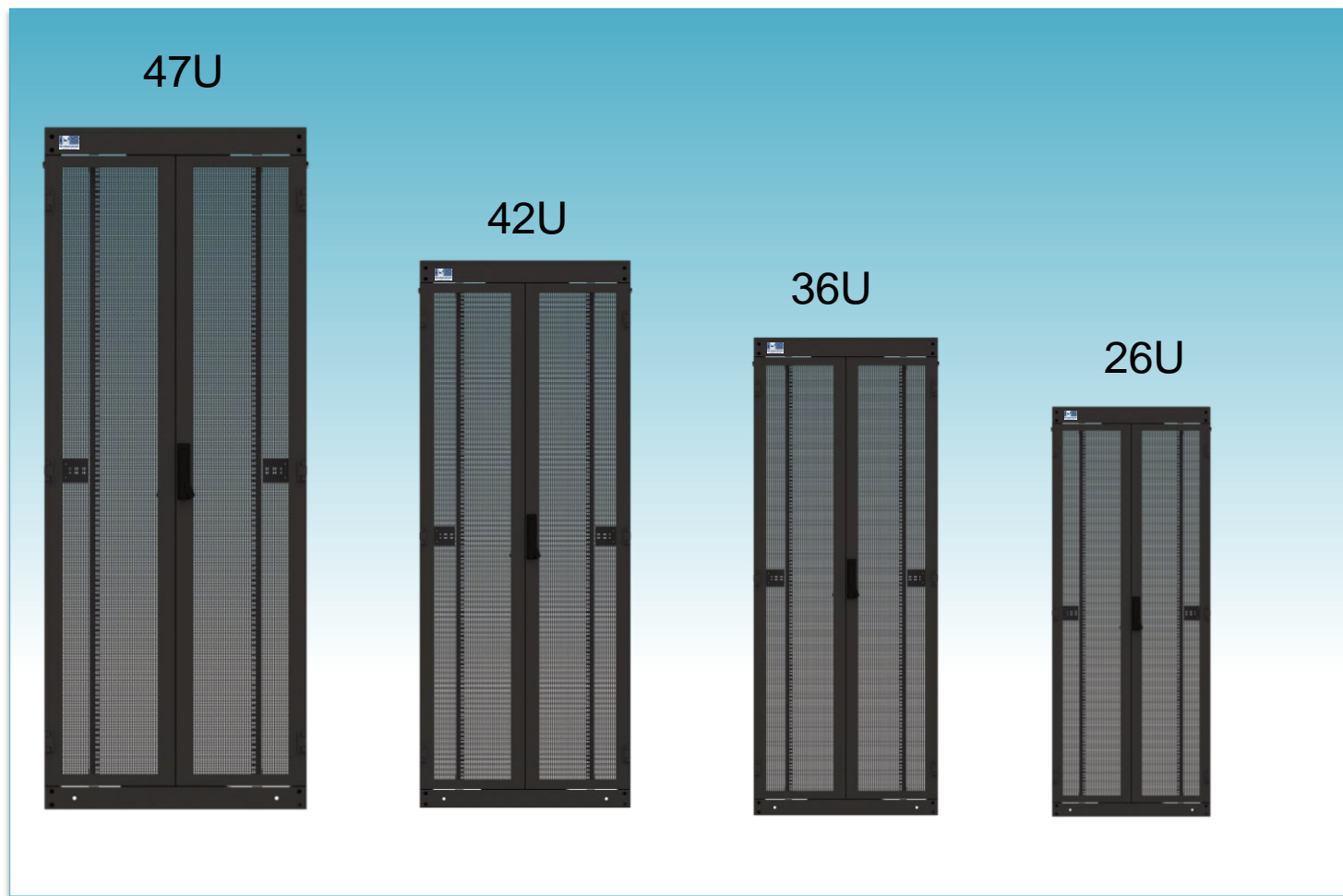




## 800x800 Free standing server Cabinets



### Description

HCS DataLine series includes a wide range of high quality racks, cabinets and enclosures, specially designed for structured premise cabling in local area networks (LANs), including distribution and equipment, cross connect cabinets and racks, splice boxes, climate control and many more components for both copper and fiber optic cabling systems.

HCS DataLine 11 800x800 Free Standing Server Cabinets are suitable for both office environments & equipment rooms, having an attractive design combined with a long-lasting, solid & stable construction, guaranteed by the HCS DataLine Logo & Trademark

### Applications

The special design of HCS DataLine 11 Free Standing Server Cabinets allows the use of a large variety and types of accessories, including 19" panels, hubs and active equipment, fixed and/or sliding shelves, fan units, power strips, pulleys, grounding and potential equalization bus bars, lighting units, stacking kits, floor fixing kits, cable management panels, and many other 19" devices and accessories

### Qualifications and Approvals

HCS DataLine 11 Free Standing Server Cabinets are supported by HCS DoubleSafe™ QA Program and they comply to the following standards:

General	Steel Sheets	Powder Coating	Mechanical	Assembly	IT equipment safety	Fan Unit & Power Strips
<input type="checkbox"/> TS EN 60297-3-100/101/102 <input type="checkbox"/> DIN 41494 <input type="checkbox"/> TS EN 60529-1 <input type="checkbox"/> IP20 (Optional IP 42)	<input type="checkbox"/> DIN EN 10130-91 <input type="checkbox"/> DIN EN 10327 <input type="checkbox"/> EREĞLİ 6112	<input type="checkbox"/> DIN 67530 <input type="checkbox"/> ASTM D 2796 <input type="checkbox"/> ASTM D 3451	<input type="checkbox"/> TS EN 61587-1	<input type="checkbox"/> TS EN 60917-2-1/-2	<input type="checkbox"/> TS EN 60950-1 <input type="checkbox"/> IEC 60364-7-707	<input type="checkbox"/> TS EN 60439-1 <input type="checkbox"/> TS EN 62208

## 800x800 Free standing server Cabinets



GENERAL PROPERTIES	
<b>MATERIAL</b>	Sheet & Galvanized steel. 1.0/1.2/1.5/2.0 mm thickness.
<b>PAINT AND COLOR</b>	Special steel finish with electrostatic powder coat, RAL 9005 black. Other colors available upon request.
<b>FRONT DOOR</b>	Double opening perforated door, multipoint europrofile cylinder lock. ( 135 degree opening )
<b>REAR DOOR</b>	Double opening perforated door, multipoint europrofile cylinder lock. ( 135 degree opening )
<b>SIDE PANEL</b>	Removable side panels, cylinder locking. Sliding locking
<b>TOP CHASSIS</b>	300 x 70mm brushed cable entry hole, 4x optional ventilation units
<b>BOTTOM CHASSIS</b>	300 x 70mm brushed cable entry hole, 2x, Sliding brushed cable entry 300 x 300mm 1x
<b>19" PROFILES</b>	Adjustable 4 units (U marked 2x front) 2x rear
<b>VERTICAL CABLE ORGANIZER</b>	Mountable front left & right vertically (optional).
<b>SIDE VERTICAL OPEN CABLE ORGANIZER</b>	Mountable side left / right- galvanised.
<b>PDU</b>	9 Way schuko type power strip
<b>GROUNDING</b>	Grounding Cable
<b>LOADING CAPACITY</b>	1500 kg max. (42U, TS EN 61587-1).

General	Steel Sheets	Powder Coating	Mechanical	Assembly	IT equipment safety	Fan Unit & Power Strips
<input type="checkbox"/> TS EN 60297-3-100/101/102 <input type="checkbox"/> DIN 41494 <input type="checkbox"/> TS EN 60529-1 <input type="checkbox"/> IP20 (Optional IP 42)	<input type="checkbox"/> DIN EN 10130-91 <input type="checkbox"/> DIN EN 10327 <input type="checkbox"/> EREĞLİ 6112	<input type="checkbox"/> DIN 67530 <input type="checkbox"/> ASTM D 2796 <input type="checkbox"/> ASTM D 3451	<input type="checkbox"/> TS EN 61587-1	<input type="checkbox"/> TS EN 60917-2-1/-2	<input type="checkbox"/> TS EN 60950-1 <input type="checkbox"/> IEC 60364-7-707	<input type="checkbox"/> TS EN 60439-1 <input type="checkbox"/> TS EN 62208

## CABINETS ACCESSORIES



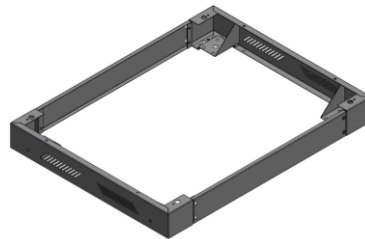
9 WAY PDU 19" PDU



Horizontal organizer



Grounding Busbar



Plinth



Wheel

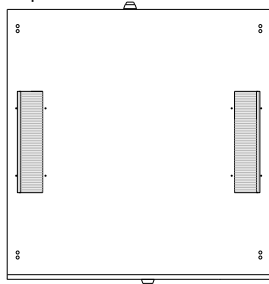


Organizer with front cover

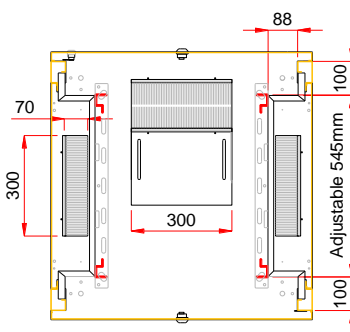
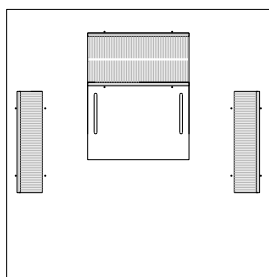
HCS P/N	Description	internal Height mm	Width mm	Depth mm	Height mm	Net Weight Kg	Notes
C11-01688 EU	16U 19" (800x800)mm DATALINE™11 FREE STANDING CABINET (Front and rear doors flat perforated double opening with europrofile cylinderlock) with 6 pcs Brush, with side panel	712	780	800	862	N/A	
C11-02088 EU	20U 19" (800x800)mm DATALINE™11 FREE STANDING CABINET (Front and rear doors flat perforated double opening with europrofile cylinderlock) with 6 pcs Brush, with side panel	890	780	800	1040	N/A	
C11-02288 EU	22U 19" (800x800)mm DATALINE™11 FREE STANDING CABINET (Front and rear doors flat perforated double opening with europrofile cylinderlock) with 6 pcs Brush, with side panel	980	780	800	1130	N/A	
C11-02688 EU	26U 19" (800x800)mm DATALINE™11 FREE STANDING CABINET (Front and rear doors flat perforated double opening with europrofile cylinderlock) with 6 pcs Brush, with side panel	1156	780	800	1306	N/A	
C11-03288 EU	32U 19" (800x800)mm DATALINE™11 FREE STANDING CABINET (Front and rear doors flat perforated double opening with europrofile cylinderlock) with 6 pcs Brush, with side panel	1422	780	800	1572	N/A	
C11-03688 EU	36U 19" (800x800)mm DATALINE™11 FREE STANDING CABINET (Front and rear doors flat perforated double opening with europrofile cylinderlock) with 6 pcs Brush, with side panel	1600	780	800	1750	N/A	
C11-03988 EU	39U 19" (800x800)mm DATALINE™11 FREE STANDING CABINET (Front and rear doors flat perforated double opening with europrofile cylinderlock) with 6 pcs Brush, with side panel	1734	780	800	1884	N/A	
C11-04288 EU	42U 19" (800x800)mm DATALINE™11 FREE STANDING CABINET (Front and rear doors flat perforated double opening with europrofile cylinderlock) with 6 pcs Brush, with side panel	1867	780	800	2028	N/A	
C11-04488 EU	44U 19" (800x800)mm DATALINE™11 FREE STANDING CABINET (Front and rear doors flat perforated double opening with europrofile cylinderlock) with 6 pcs Brush, with side panel	1956	780	800	2106	N/A	
C11-04788 EU	47U 19" (800x800)mm DATALINE™11 FREE STANDING CABINET (Front and rear doors flat perforated double opening with europrofile cylinderlock) with 6 pcs Brush, with side panel	2090	780	800	2240	N/A	

### 800x800 Free standing server Cabinets

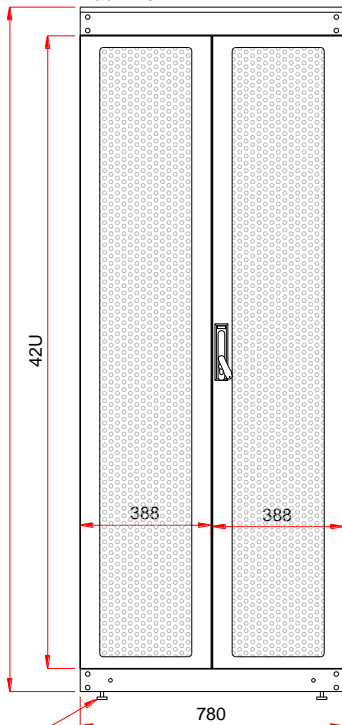
Top View



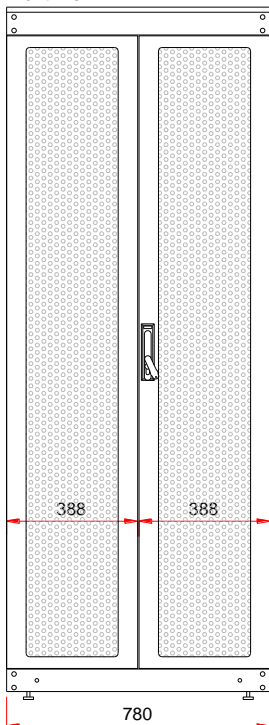
Bottom Chassis



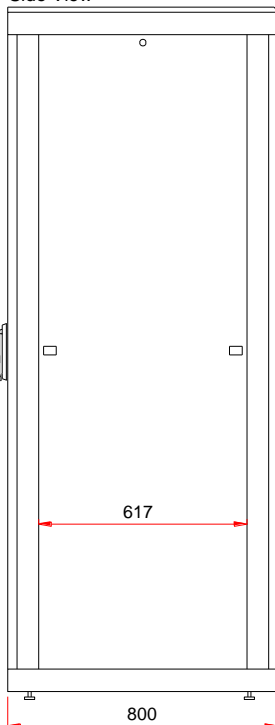
Back View



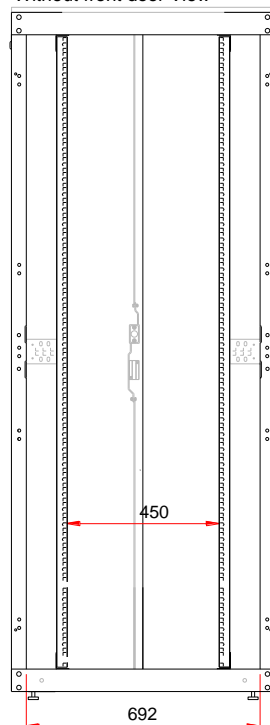
Front View



Side View



Without front door View



2028

42U

388

388

780

388

388

780

617

800

450

692

Adjustable Leveling Feet / M10 4 pcs

